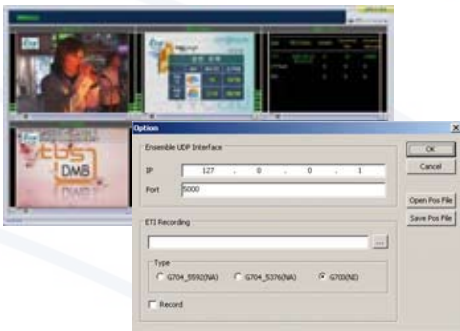


## T-DMB/DAB<sup>+</sup> /DAB and ETI Monitoring

- DABAir Multi provides monitor function based on various RF reception of Eureka-147 standard.
- Not only 'RF reception and Ensemble information monitoring' but also video, audio, data multi play are also available up to 800Kbps.
- For monitoring reception status of other broadcasting stations and handover monitoring in the same reception environment, it is possible to support simultaneous reception of multifrequency (channel) RF signal and ETI interface at the same time. It is optional specification.



### Features

- Powerful RF Monitoring Function
- RSSI, Signal Quality Monitoring
  - TII monitoring (Maximum 5 TII services simultaneously)
  - Error information Monitoring
  - Automatic/Manually logging support of every information monitored in real-time...
- Remote Monitoring Function
- 128K Special Low Speed WAN
  - Remote control and monitoring of server site PC
  - Remote RF monitoring (FIC information monitoring)
  - Remote ETI monitoring
  - Remote RF logging
  - Powerful Remote-site Monitoring / Control Function :
    - a. Remote-site PC control and monitoring
    - b. Remote service monitoring and playing
  - Powerful user security function & Various connection method :
    - a. Strong security by using AES 256 BIT Algorithm
    - b. Manually/Automatic Remote desktop lock
    - c. Static IP, Dynamic IP
  - Two-way file transfer function such as FTP and remote program update function
  - 10/100Mbps LAN/WAN
  - Support all function of the above "128K Special Low Speed WAN"
  - Remote service play & Listening to Audio Sound

# Specifications

## HIGHLIGHTS & SPECIFICATIONS

- ✓ **Excellent Stability & Flexibility**
  - Use of 3RU Server with SSD (Solid State Drive) semiconductor chip and Embedded Microsoft Windows Xp professional operating system
- ✓ **Supporting Various RF Signal & Ensemble Information Monitoring Function**
  - Real-time RF input signal information : RSSI, Signal Quality
  - Transmitter Information : TII Information (Max 5 TII Monitoring)
  - DAB Mode Information
  - Service types and Protection Level Information
  - FIC CRC, FIC EFC, MSC CER
  - EWS (Emergency Warning Service) Information
  - Reconfiguration Information
  - TS Sync information
- ✓ **Supporting all T-DMB/DAB/DAB+ services**
  - Video (H264)
  - Audio (Musicam, AAC+, BSAC)
  - Visual Radio (H264)
  - MOT (BWS, Slide Show, DLS) data
  - TPEG data
  - BIFS data
- ✓ **Remote Monitoring Support**
  - Support 10/100Mbps high speed LAN/WAN environment as well as 128K low speed WAN environment
  - Remote-site monitoring and control support
  - Remote T-DMB/DAB/DAB+ service streaming and play in remote place (LAN support only)
  - Dynamic/Static IP connection support
  - Strong security function
- ✓ **Sensitivity**
  - Band III : -99dBm (Max)
  - L-Band : -94dBm (Max)
- ✓ **Frequency Range**
  - Band III : 174 MHz ~ 240 MHz
  - L-Band : 1452 MHz ~ 1492 MHz
- ✓ **Maximum Input Signal Level**
  - Up to 0dBm
- ✓ **Decoding Range**
  - Audio : 1.8Mbps (Max)
  - Video & Data : 1.8Mbps (Max)
- ✓ **Multi channel RF reception function**
  - Maximum 3 channels available
- ✓ **ETI Monitoring function**
  - Monitoring of ETI input signal status and Full Service
  - Monitoring function support at the same time
  - ETI input signal automatic/manually storage function support
- ✓ **Detailed monitoring of all ETI standards and services**
  - ETI NA and NI decoding and playing
  - ETI NA and NI Endless loop recording
  - Ensemble and error status of sub channel can be displayed simultaneously
  - Supporting ETI NA <sup>5376, 5592</sup> and ETI NI format
- ✓ **Monitoring error status and Alarm function**
  - Main information such as G.704 Sync, NA sync, NA FEC and so on
  - CRC information of Data group, Data packet, Audio and so on
  - Other information such as TS Continuity, Reconfig
- ✓ **ETI input signal storage function**
  - Manually storage support by user's operation
  - Through setting in advance, automatic storage and management function of File



VDL Head office  
90 rue Paul Bert - 69446 Lyon Cedex 03  
FRANCE - Tel: +33 (0)4 72 84 06 00  
Fax: +33 (0)4 72 84 06 01

VDL International Sales & Marketing Office  
CityPoint - Temple Gate - Bristol BS1 6PL - UK  
Tel: +44 (0)117 373 6260  
Fax: +44 (0)117 373 6261