



# D-EVIDENCE VR

## DMB Audio Encoder for Visual Radio Services



### Highlights

- DMB Audio, compliant with ETSI TS 102 428
- High- quality audio and image encoding
- Easy to use with integral monitoring
- HE-AAC V2 audio encoding
- Image and text input (PAD) from files
- Encoded output via UDP or ETI
- Real-time video and audio level monitoring
- Local and remote setup
- Audio silence detection via SNMP
- Optional BIFS insertion via MP4 file input
- NTP client for clock synchronisation

**D-EVIDENCE VR** is a versatile encoder for visual radio (DMB Audio) broadcast services, providing superior picture quality and encoding efficiency for optimal performance.

The design combines proven elements of VDL's existing DAB+ Audio and DMB Video encoders to deliver a high-quality output with optimal efficiency.

A simple user-interface makes the encoder easy to configure, operate and monitor. Remote configuration software is also provided.

For media-rich services, **D-EVIDENCE VR** supports the insertion of both text (DLS) and images (Slideshow) from local or remote files in a carousel. This patent-pending (EU EP1903698) approach provides a simpler interface and avoids the need for additional external processing, or live video input.

Interactive services are supported by the BIFS option, which inserts MP4 image files.

The control software provides on-screen monitoring of audio and visual components. Audio silence generates on-screen alerts and SNMP traps.

## Specifications

### Audio Input

#### Analogue

RCA unbalanced (optional XLR balanced)

#### Digital

RCA, XLR

#### Sampling Rates

24kHz, 32kHz, 48kHz

#### Bit-Rates

16kbits/s - 192kbits/s stereo

8kbits/s - 128kbits/s mono

### Image (Slideshow) Input

#### JPG files

Via local shared folder, or remote FTP folder  
(EU patent-pending EU EP1903698)

#### Frame rate

Selectable from 0.1 frame/s to 1 frame/s

### Text (DLS) Input

Direct insertion of text files on local shared folder, remote shared folder, VDL **D-VAUDAX** Multiplexer PAD Inserter, VDL **PAD-Server**

### BIFS Input

MPEG4 image files on local shared folder, or remote shared folder

Option available in 2010

### Transport Stream Output

#### MPEG-2 TS:

UDP/IP, unicast or multicast, RTP option

#### Compliance:

ETSI TS 102 428

#### PID assignment

#### PSI information

PAT, PMT, OD, BIFS

#### Output bit-rate

up to 1Mbit/s

#### Output Options

ETI

ASI

### Control and Management

#### Local

configuration software with monitoring

#### Remote

configuration software

#### System Clock Synchronisation

NTP client software

### External Signalling

#### SNMP

Silence detection traps

### Physical

#### Chassis

2U rack-mount

#### Dimensions

450mm (w) x 88mm (h) x 395mm (d)

#### Weight:

7.5kg weight

### Power

#### Power Supply

100V – 240V AC, 50Hz – 60Hz

#### Power Consumption

Less than 200W

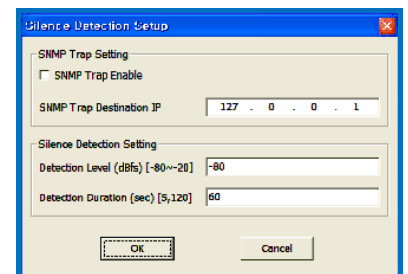
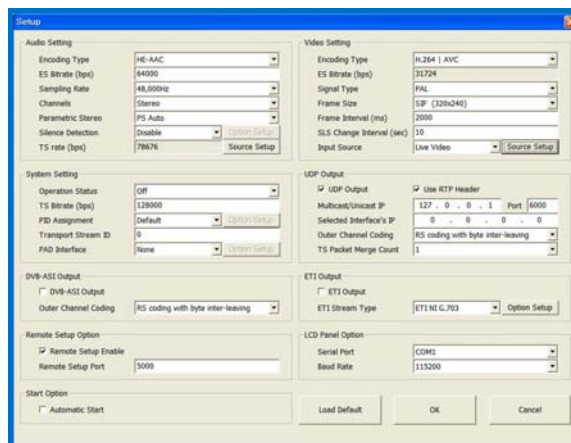
### Environment

#### Operating Temperature

+5° to +50° C

#### Humidity

0 to 95% non-condensing



D-EVIDENCE VR provides simple configuration for Audio, Text and Visual components

Audio Silence Detection Settings

Specifications may be subject to change without notice.



Head Office  
90 rue Paul Bert – 69446 Lyon cedex 03 – France  
Tel: +33 (0)472 840 600 – Fax: +33 (0)472 840 601  
E-mail: [contact@vdl.fr](mailto:contact@vdl.fr)

International Sales and Marketing Office  
CityPoint – Temple Gate – Bristol – BS1 6PL – UK  
Tel: +44 (0)117 373 62620 – Fax: +44(0)117 373 6261  
E-mail: [sales@vdl.fr](mailto:sales@vdl.fr)