

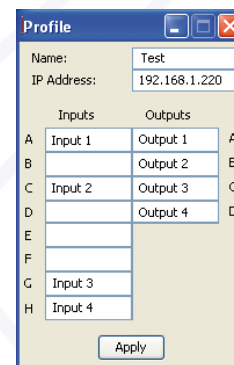
## ETI DIGITAL ROUTER

- D-ROUTER is a programmable 8 x 4 Router for routing, splitting and switching DAB & DMB Multiplex ETI bitstreams.

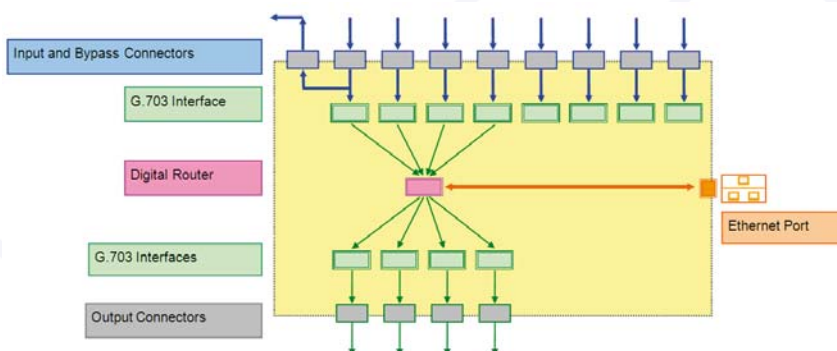


- For compatibility with the DAB Ensemble Transport Interface (ETI) specifications, D-ROUTER signal input/output interfaces incorporate ITU G.703 compatible receivers/drivers; common-mode line chokes; over-voltage protection and isolation transformers.

- The D-ROUTER Controller software provides graphical mapping control with the ability to save, edit and load stream mapping. Using the Profile editor, each D-ROUTER can be given a user-defined friendly name and Input/Output stream labels.



Mapping, Signal Detection and Connection status



D-ROUTER supports the selection of any 4 outputs from any 8 inputs



Profile Editor with user-defined friendly Unit name and Input/Output Stream Labels

# D-ROUTER Specifications

## INPUT

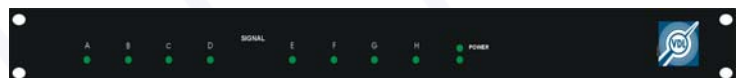
- ✓ **Signal Interface**
  - ETI or STI compatible with ITU G.703
- ✓ **Input Impedance**
  - 40 k $\Omega$  without supplied external terminator
  - 75  $\Omega$  with supplied external terminator fitted to the bypass BNC connector
- ✓ **Input amplitude**
  - $\pm 2.37\text{ V} \pm 10\%$  nominal
  - $\pm 5\text{ V}$  maximum
- ✓ **Pulse width**
  - 230 ns to 260 ns
- ✓ **Input jitter tolerance**
  - 14UI @ 750Hz
  - 0.4UI, 10kHz to 100kHz

## OUTPUT

- ✓ **Signal Interface**
  - ETI or STI compatible with ITU G.703
- ✓ **Output impedance**
  - 75  $\Omega$
- ✓ **Output amplitude**
  - $\pm 2.37\text{ V} \pm 10\%$
- ✓ **Pulse width**
  - 244 ns nominal
- ✓ **Output jitter attenuation**
  - 10dB/decade from 10Hz
- ✓ **Input to Output Delay**
  - Minimum: 2  $\mu\text{s}$
  - Maximum: 20  $\mu\text{s}$

## ENVIRONMENT & MECHANICAL DATA

- ✓ **Status and Control**
  - Power
  - Signal presence
  - D-ROUTER Controller software
- ✓ **Input/Output connection**
  - Data
  - BNC
  - AC Power
  - 3 pin IEC
- ✓ **Power**
  - 85V - 264V, 47Hz - 63Hz, universal input
- ✓ **Physical**
  - 1U rackmount chassis
  - 428mm x 105mm x 44mm
  - 1.6kg
- ✓ **Environmental**
  - 0°C to 70°C
  - 5% to 95% non-condensing



D-ROUTER front panel



D-ROUTER rear panel



VDL Head office  
90 rue Paul Bert - 69446 Lyon Cedex 03  
FRANCE - Tel: +33 (0)4 72 84 06 00  
Fax: +33 (0)4 72 84 06 01

sales@vdl.fr - www.vdl.fr - www.vdl-broadcast.com  
Siren: 421 579 400 - NAF: 6130 Z

VDL International Sales & Marketing Office  
CityPoint - Temple Gate - Bristol BS1 6PL - UK  
Tel: +44 (0)117 373 6260  
Fax: +44 (0)117 373 6261