

# Monitoring and Analysis DABSTOR

ETI Logger/Replayer/Recorder/Analyser



[www.vdl.fr](http://www.vdl.fr)

[www.vdl-broadcast.com](http://www.vdl-broadcast.com)

DAB DAB<sup>+</sup> DAB



## ETI Logger/ Recorder/ Replayer/ Analyser

DABSTOR is available with a choice of options for ETI Logging, Analysis, Recording, Replaying and remote access to multiple Audio, Video and Data services.

For logging, troubleshooting, testing, simulation and analysis requirements, DABSTOR provides evidence of multiplexer output and configuration, with options for live monitoring, logging and analysis of a complete DAB/DAB<sup>+</sup>/DMB Ensemble.

The DABSTOR Ensemble Logger application provides continuous capture to disk, using sequential-file endless-loop recording for up to 180-days.

In addition to the Ensemble Logger and Ensemble Analyser options, users are able to simultaneously view multiple Audio, Video and Data services from a single receiver at one or more remote locations.



### Highlights

- Ensemble Logger: sequential-file recording to disk; one or two ETI(NA) or ETI(NI) input streams; up to 180-days endless-loop capacity
- Ensemble Analyser: live and off-line ETI and FIC analysis for up to four ETI(NA) or ETI(NI) input streams
- Ensemble Recorder: individual-file recording; up to four ETI(NA) or ETI(NI) input streams; delay timer
- Ensemble Replayer: individual-file or sequential-file replay; fragment selection, loop and dub functions
- Ensemble Publisher: publishes services to one or more Ensemble Subscribers via multicast network

### Mainframe Configurations

Available in 1U, 2U, 4U rack-mount and transportable mainframe configurations, depending on application requirements



## ● ETI Logger

The Logger application provides a continuous history for long-term capture or monitoring applications. To support continuous operation, options include redundant data disk(s), dual-power power supply and alarm outputs.



ETI Logger

### HIGHLIGHTS

- Continuously records input bitstream as a sequence of 60-minute files to disk for off-line replay or analysis
- Two-stream logging when used with two DAB Input/Output cards
- Endless-loop or single-pass recording
- Selectable loop time, up to the available disk capacity
- Access to history files without interrupting recording

## ● Recorder

The Recorder application is ideal for short-term testing, trials and demonstrations – typically up to 2 hours. The delay timer option can be used to start recording at a specified time.



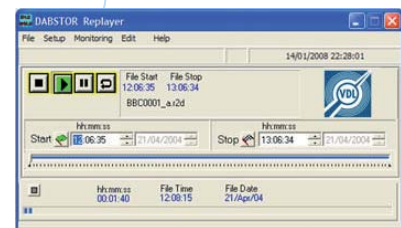
Ensemble Recorder

### HIGHLIGHTS

- Records complete bitstreams to disk for off-line replay or analysis
- Four-stream recording when used with two DAB Input/Output cards
- Delay timer recording option
- Selectable recording duration, up to the available disk capacity

## ● Replayer

The Replayer application enables data files to be replayed individually, or sequentially. Replay can be of the complete file or a selected fragment.



Ensemble Replayer

### HIGHLIGHTS

- Outputs complete bitstreams from previously recorded files
- Individual-file or sequential-file replay
- Loop replay
- Internal/external replay clock selection
- Dub (copy) complete recording or selected fragment
- ETI File Converter option for non-VDL file formats



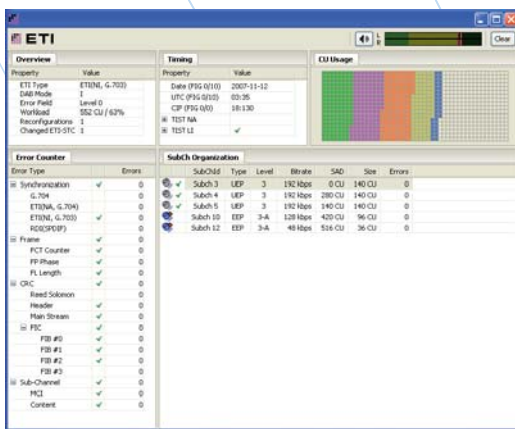
## Analyser

The Analyser application handles up to four real-time ETI input streams and provides a detailed breakdown of the Ensemble payload and FIC.

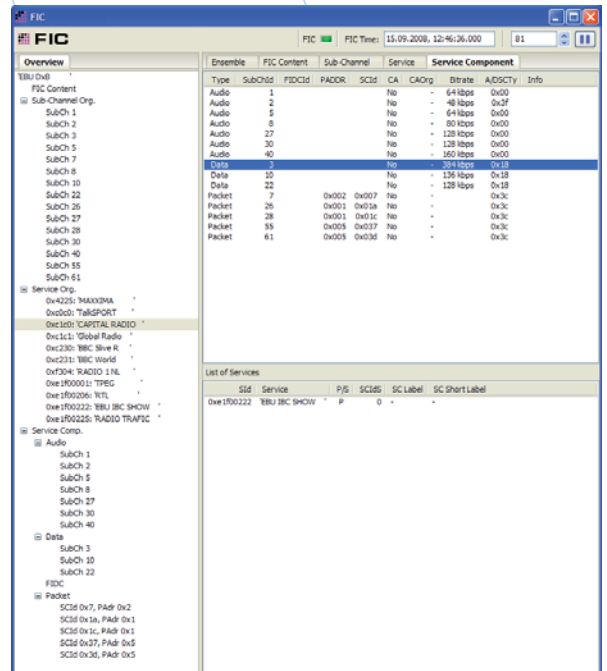
Comprehensive event messaging displays reconfigurations, warnings and errors in the ETI stream.

Analyser viewer windows include ETI transport stream, Capacity Unit usage, Configuration, Sub-channels and Service Components.

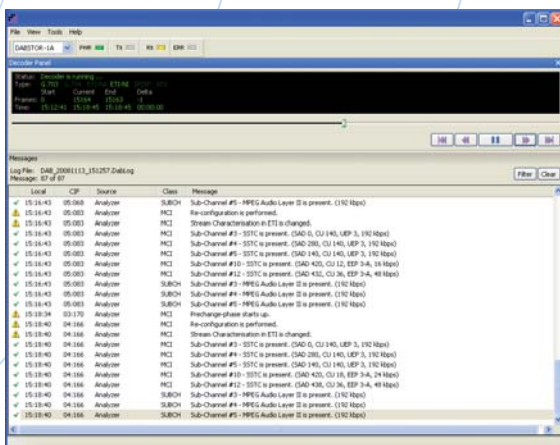
For live analysis, the Analyser accepts up to 4 ETI input streams. For off-line analysis, the application accepts an ETI stream from a DABSTOR Replayer application.



Ensemble Payload (ETI) Analyser Window



FIC Analyser Window



Messages List



VDL Head office  
 90 rue Paul Bert - 69446 Lyon Cedex 03  
 FRANCE - Tel: +33 (0)4 72 84 06 00  
 Fax: +33 (0)4 72 84 06 01

VDL International Sales & Marketing Office  
 CityPoint - Temple Gate - Bristol BS1 6PL - UK  
 Tel: +44 (0)117 373 6260  
 Fax: +44 (0)117 373 6261

sales@vdl.fr - www.vdl.fr - www.vdl-broadcast.com  
 Siren: 421 579 400 - APE: 6120 Z