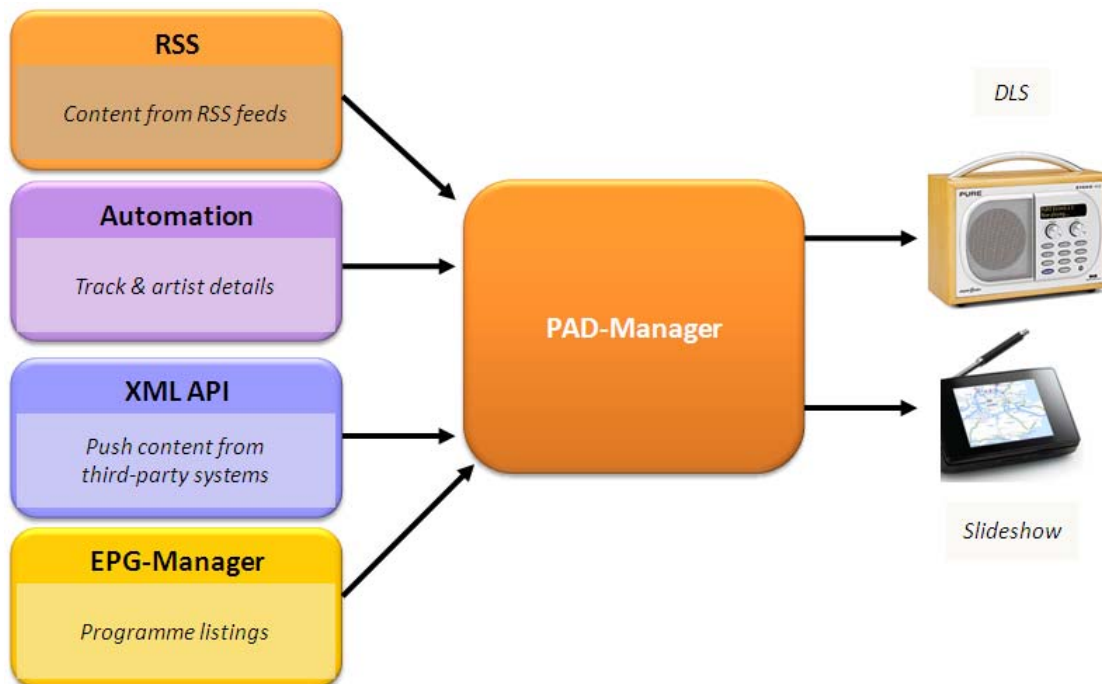


PAD-Manager

Data Content Manager for DLS and Slideshow



PAD-Manager provides control over Programme Associated Data (PAD) for use with Digital Audio Broadcasting (DAB and DAB+) Audio Encoders. The scalable **PAD-Manager Rapid** software can be used by single stations broadcasting a single DLS service, through to large multi-station installations, with complex data processing.

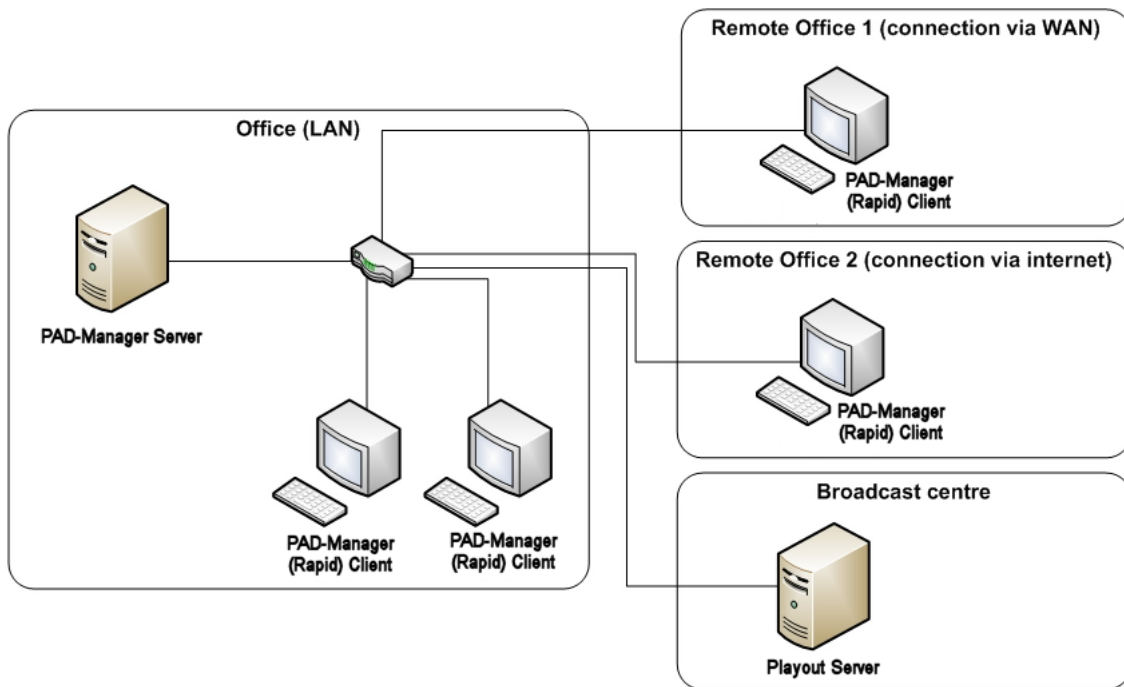


Content Sources

Data content can be imported in a number of formats. For other formats, please contact VDL.

- RSS version 1.0 and 2.0
- *PAD-Manager Rapid* Push XML API format
- Automation/playout systems
- Programme schedules from VDL Guide EPG-Manager

PAD-Manager

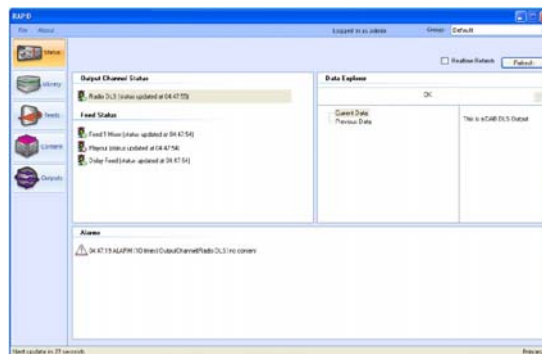


PAD-Manager Rapid: Server – Client Connections

Content Delivery

The content, DAB DLS (including Intellitext) and DAB Slideshow, is stored centrally on the **PAD-Manager**, which delivers the output data streams to the **PAD-Insertor** on a VDL **D-VAUDAX** Multiplexer, or VDL **PAD-Server**. Individual users connect to the PAD-Manager from their own local or remote PC using *Rapid* client software. The easy-to-use client software minimises the training requirements for radio station users.

PAD-Manager provides extensive control over DLS and Slideshow messages. This enables broadcasters to build complex DLS and Slideshow services, combining now playing information with news, travel, weather, advertising and competition messages.



Advanced Content Management

PAD-Manager Rapid software includes a number of advanced features for managing automation/playout feeds.

- For broadcasters with radio stations that broadcast from multiple studios and/or include network programming, **PAD-Manager** includes a comprehensive feed mixer for incoming playout feeds.
- This feature allows **PAD-Manager** to either combine data from multiple feeds, or switch between different feeds, to produce a final playout feed.
- **PAD-Manager** can be interfaced with an audio switching system to automatically switch between studio sources.
- To compensate for studio delay systems, **PAD-Manager** can delay the incoming playout feed, either by a fixed amount of time, or a variable amount, based on time-zone.
- Additional information can be added to an incoming playout feed, such as images from a radio stations' database.



VDL Head office
90 rue Paul Bert - 69446 Lyon Cedex 03
FRANCE - Tel: +33 (0)4 72 84 06 00
Fax: +33 (0)4 72 84 06 01

VDL International Sales & Marketing Office
CityPoint - Temple Gate - Bristol BS1 6PL - UK
Tel: +44 (0)117 373 6260
Fax: +44 (0)117 373 6261

sales@vdl.fr - www.vdl.fr - www.vdl-broadcast.com
Siren: 421 579 400 - NAF: 6130 Z