

PAD-Server

PAD-Insertion for VDL Audio Encoders



PAD-Server-2



PAD-Server-20

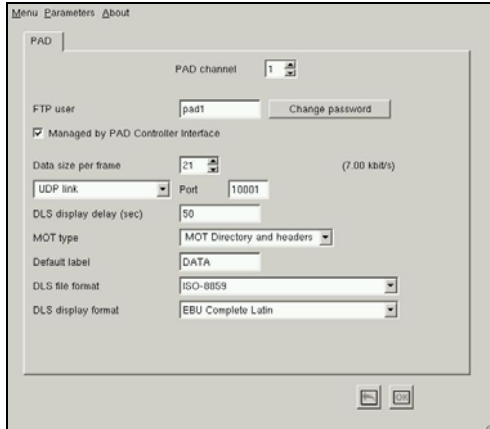
PAD-Server[®] enables insertion of Programme Associated Data (PAD) directly to Digital Audio Broadcasting (DAB and DAB+) Audio Encoders.

As an alternative to VDL's Multiplexer internal PAD Insertion option, the use of an external **PAD-Server** can provide greater flexibility with system configurations

A **PAD-Server** will normally be co-located with one or more audio encoders, which can typically be at the Multiplexer site, Broadcast Centre or Studio.

For applications where the Audio Encoders are not co-located with the Ensemble Multiplexer, the **PAD-Server** can be used to minimise network traffic by eliminating the need to insert the PAD data via the Multiplexer.

PAD Services are configured via an easy-to-use graphical user interface.



PAD-Server2

PAD-Server-2 is supplied in a 2U rack-mount chassis and supports the insertion of up to two PAD services via IP.

Options include UECP UDP input for insertion of one or two DLS and DLPlus services; software for remote control under Windows OS and an API (SOAP).

PAD-Server-20

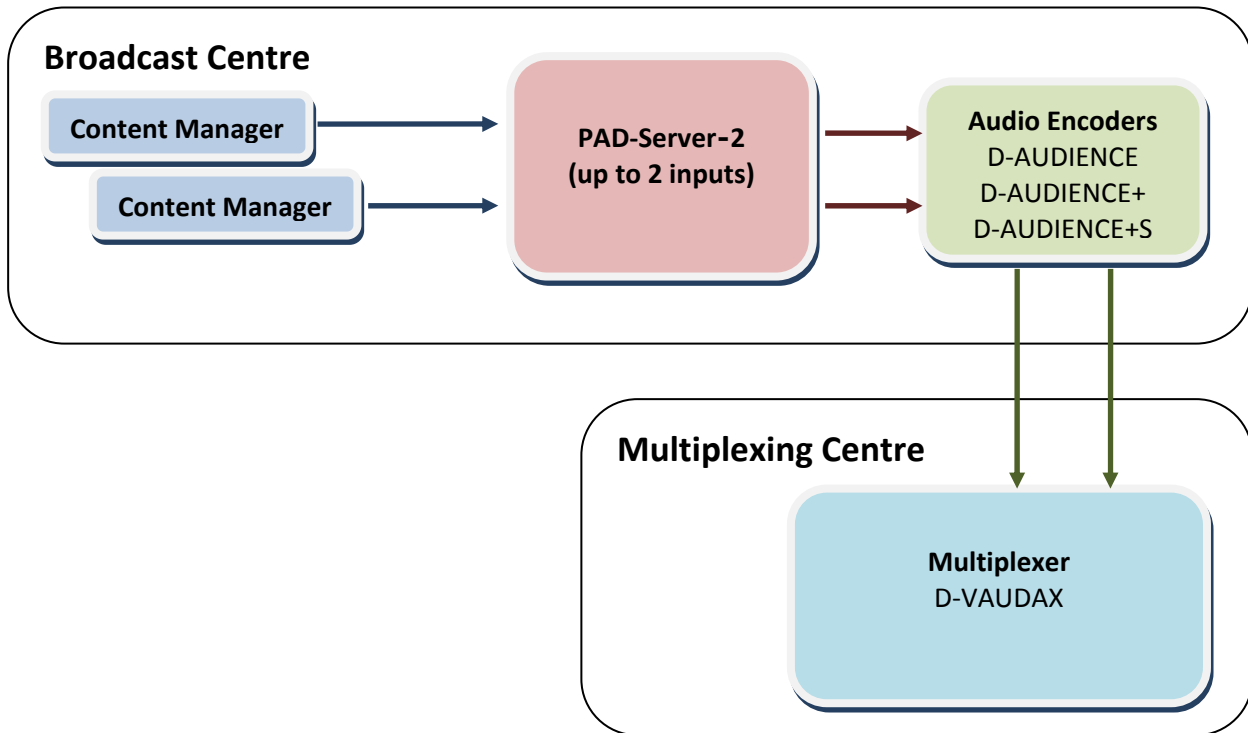
PAD-Server-20 is supplied in a 4U rack-mount chassis and supports the insertion of up to twenty PAD services via IP.

Options include UECP UDP input for insertion up to 10 DLS and DLPlus services; software for remote control under Windows OS; an API (SOA.) and redundant hot-swap power supply.



PAD-Server

Example PAD-Server-2 Application – Audio Encoders and PAD-Server at Multiplexer Centre



Example PAD-Server-20 Application – Audio Encoders and PAD-Server at Multiplexer Centre

